

ONLINE ONLY FARM EQUIPMENT CONSIGNMENT AUCTION

Bidding Begins Wednesday, September 6 @ 12 PM
Bidding Closes Wednesday, September 13 @ 12 PM

Machinery lot is located at 3080 Taft Ave, Sanborn, IA.

Directions: From Sanborn, IA go 4 miles East & 1 1/4 miles North or from Hartley, IA go 4 miles West & 1 1/4 miles North. Sanborn, IA is located approx. 70 miles Northeast of Sioux City, IA & approx. 35 miles South of Worthington, MN.



1. Westfield 61'x8" auger
2. Stanhoist 52' PTO elevator
3. Kooiker S1000 61'x10" auger
4. Sudenga 61' PTO auger
5. Feterl 66'x10" auger
6. Westfield 62'x8" auger
7. Kewanee 42' PTO elevator
8. Sudenga 61'x8" auger
9. Sudenga 60'x8" auger
10. Feterl 30'x8" truck auger
11. 1974 Chevy Cheyenne pickup
12. 2004 Chevy HD 2500 Silverado
13. 1988 Chevy Custom Delux dually pickup
14. 2000 Chevy 3500 HD dually pickup
15. 1968 Chevy 50 dump truck
16. 1994 Ford Super Duty pickup
17. 2007 Ford Expedition
18. John Deere 230 hyd 25' fold disk
19. Brady 14' stalk chopper
20. Demco 1000 gal big wheel sprayer
21. Case IH 4800 24' field cultivator
22. CIH 470 tandem 15' disk
23. Case IH 14 5-shank V-ripper
24. John Deere 3970 2-row chopper
25. 1974 John Deere 7520 4WD tractor
26. John Deere 510 5-shank disk chisel
27. 1500 gal water tank on 16' homemade trailer
28. Homemade running gear
29. Hobart 3kw electric generator
30. John Deere 350 7' sickle mower
31. Older hog head chute
32. New Idea 7' 3pt sickle mower
33. SpeeCo post hole auger
34. John Deere 7200 air 8-row 36" manual fold planter
35. Small 16'x6" auger
36. Homemade corn head running gear transport
37. Dixie woods 6' rotary mower
38. Homemade bean head running gear transport
39. 300 gal sprayer with 26' booms
40. Frontier DM5070 9' 7-disc mower
41. Tar trailer with 475 gal tank on tandem axle trailer
42. 4) Livestock gates
43. Ford 5' rotary mower
44. Parker 4800 500 bu gravity wagon
45. IH 200 mixer feed wagon
46. Dakon divided gravity box seed wagon
47. Roorda 16' front unload silage wagon
48. Roorda 16' front unload silage wagon
49. Roorda 16' rear unload silage wagon
50. Roorda 12' rear unload silage wagon
51. Parker 325 bu gravity wagon
52. Parker 2500 325 bu gravity wagon
53. 12.5Lx15 flotation gravity wagon tire
54. Dakon 250 bu gravity wagon
55. Kory 200 bu gravity wagon
56. Killbros 350 bu gravity wagon
57. Killbros 375 bu gravity wagon
58. EZ Flow 225 bu gravity wagon
59. Farm King 200 bu gravity wagon
60. Kory 300 bu gravity wagon
61. 6'x12' Parade rack
62. Dakon 250 bu gravity wagon
63. J&M 350 bu gravity wagon
64. J&M 350 bu gravity wagon
65. Dakon 250 bu gravity wagon
66. Dakon 250 bu gravity wagon
67. Kory 325 bu gravity wagon
68. Wooden flare box
69. Farmhand front unload silage wagon
70. Farmhand front unload silage wagon
71. Older Roorda feeder wagon
72. Older Glencoe 14' pull-type field cultivator
73. 1949 Antique New Idea horse drawn manure spreader
74. Kooiker 565 hyd loader
75. IH 944 4-row 36" corn head
76. 2009 Honda Rubicon 4-wheeler
77. Case IH 183 12-row 30" row crop hyd flat fold cultivator
78. Wilrich 24' hyd fold field cultivator
79. Antique triple box wagon
80. Lundell tandem axle running gear
81. White 588 5-bottom plow
82. Hydraulic pull-type 14' hog cart
83. International 37 14' tandem disk
84. Mayrath 4" auger
85. Short drag elevator
86. Tebben deep till 5-shank 3pt ripper
87. Steel man basket
88. 300 gal poly tank pull-type sprayer
89. Lenz 3pt chisel plow
90. John Deere BWA 20' disk
91. Hideaway 850WT pickup camper
92. Case IH 1020 25' bean head
93. Brent 640 600 bu gravity wagon
94. Lundell wagon
95. Lundell wagon
96. 8-bolt 8.25x20 truck tire
97. 8-bolt 9.00x20 truck tire
98. Parker 4000 gravity wagon
99. Case IH 2020 30' bean head
100. Wilrich 2500 25' field cultivator
101. Lenz 11-shank 3-pt chisel plow
102. Allis Chalmers C tractor
103. Farmall Super H tractor
104. Homemade 5'x10' 2-wheel trailer
105. 1070 Case tractor
106. Lundell chisel 15-shank plow
107. Farmall M tractor
108. Wincharger 115/230 volt electric belt driven generator
109. Bolens garden tractor
110. John Deere 4-bar side rake
111. John Deere 920 bean head
112. 16' Flatbed with 2" bed
113. 16' hay rack with 2" bed
114. Lundell 8-ton running gear
115. Lundell 8-ton running gear
116. 3pt post hole auger
117. King cutter 3pt rear adjustable 6' blade
118. rolls of chain link fence
119. Aluminum Mad ramps
120. 55 gal drum storage
121. 3-pt hitch platform
122. Truck bed small spray platform
123. John Deere 5'5" rotary mower
124. Panorama Inc 3pt 5-disk PTO mower
125. 50 gal portable diesel fuel tank
126. New Holland 7' bar pull-type sickle mower
127. John Deere 6' rotor mower
128. 2) hydraulic cylinders
129. Parts washer with pump
130. Pickup tool box
131. John Deere F725 mower
132. Cub Cadet 1250 48" deck mower
133. 2) metal patio chairs
134. Heavy red tarp
135. Predator gas portable 2500 watts generator
136. Mac tool cart
137. 5-fuel gas nozzles and electric pump
138. 6' shop rack stand
139. Antique steel wheels
140. LB White hanging heater
141. Stihl 017 chain saw
142. Stout 66" hyd brush grapple
143. 2) Dee Zee 5' pickup side tool boxes
144. 100 gal portable pickup fuel barrel
145. Unload extender for combine
146. 2) John Deere planter units
147. 2) John Deere 7200 planter units
148. 4) Yetter row cleaners
149. 110 gal aluminum auxiliary diesel fuel tank
150. 16.9x26 Goodyear tires
151. 18.4x26 Firestone tires
152. 18.4x26 Firestone tires
153. 3) Radiator - GM250
154. Tires chains
155. Pickup tool box
156. Pickup tool box
157. Pickup tool box
158. 2) extension combine auger
159. 2) ribbed front tractor tire
160. Sukup 12" bin fan
161. Sand shovel
162. 425-65R22.5 wagon tire
163. 2 LT 235-85R16 tire
164. 12.5x15 flotation tire
165. 18.5x8.5x8 golf cart tire
166. dual mounts hub extension
167. 4) livestock gates
168. pump with electric motor
169. cable and black tool box
170. CB radios
171. Round 25 gal poly yellow tank
172. Laverne ag hitch
173. Peterson concrete cattle waterer
174. Westfield 70'x10" auger
175. 72" brush grapple
176. 2) Big Sioux 2-ton hog feeders
177. Frontier RB196 8' 3pt scraper blade
178. Portable eye wash station
179. Knaack lockable steel job box
180. Woods 3pt rotary mower
181. Ford 416 semi-mounted 4-bottom plow
182. 4'x8' utility trailer
183. T posts ~ 44
184. T posts ~ 44
185. T posts ~ 44
186. Case IH RBX 562 round baler
187. 6-bottom plow
188. Tandem axle water trailer
189. Kewanee 1020 hyd 21' fold disk
190. International 720 6-bottom 18" plow
191. Hydraulic loader with 7' bucket
192. Case IH 1640 diesel combine
193. Case IH 1020 25' bean head
194. 1990 John Deere 9500 combine
195. John Deere 920 full finger flex head bean head
196. John Deere 643 6-row 30" corn head
197. International 183 6 disk 30" cultivator
198. International 460 WF gas tractor
199. Homemade wooden wagon
200. Homemade wooden wagon

Over 400+ lots!!!

MORE DETAILS AND
PICTURES ON OUR WEBSITE!



Terms: Equipment will be sold ONLINE ONLY by lots. View www.vw72.com for more info & photos. Bidding will begin September 6 at 12 PM and soft close September 13 at 12 PM. View www.vw72.com for more info & photos. Potential bidders must agree to these terms and conditions as well as registering 24 hours prior to bidding. Online announcements will supersede any written advertising information. This property is being sold "as-is" "where-is". Information contained within this advertising was received from sources deemed to be reliable, however no warranties are provided by the auction company regarding these. All prospective bidders are encouraged to take whatever steps necessary to satisfy themselves regarding the sizes, condition, hours, years, miles and all other information provided in this ad. There are no warranties expressed or implied by the auction company or auctioneers. The auction company represents the SELLERS in this transaction. Payment in full at time of pickup. Additional terms and conditions are posted online. Potential bidders must agree to these terms and conditions prior to registering and bidding. There will be a 20% buyers premium per item capped at \$1,000. ALL EQUIPMENT MUST BE REMOVED WITHIN 45 DAYS OR WILL BE ASSESSED A \$4 PER DAY PER ITEM RENT FEE.

Auction Company Note: This is our annual Fall Farm Equipment Consignment Auction...now ONLINE ONLY. Lots of great equipment was consigned. We thank our sellers for working with us! Please reach out if you have any questions or concerns. Remember to register to bid! Rich, Todd, Shannon & Levi



www.vw72.com

215 Main St.
Sanborn, IA 51248
712-729-3264
auctions@tcaexpress.net

Auctioneers

Rich Vander Werff
Sanborn, IA
712-261-0298

Todd Hattermann
Paullina, IA
712-348-0111

Shannon Rydberg
Sanborn, IA
850-712-7041

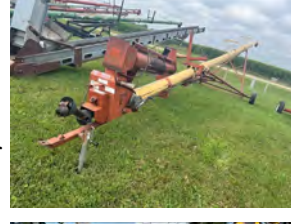
Levi Mouw
Edgerton, MN
712-441-6898



201. Parker 2600 ~350 bu gravity wagon
 202. IH 540 4-bottom 16" plow
 203. Howard 8' Rotavator
 204. 9.5x16.5LT tires
 205. 15'x8' wooden flatbed
 206. Dakon 250 bu gravity wagon
 207. Demco 365 bu gravity wagon
 208. Lundell 350 bu gravity wagon
 209. EZ Flow 300 bu gravity
 210. Artsway 400A grinder mixer
 211. Demco 300 bu gravity wagon
 212. Demco 365 bu gravity wagon
 213. John Deere 550 500-gal sprayer
 214. Ford 8N tractor
 215. King cutter 3pt landscape rake
 216. Case IH 183 12-row 30" row crop hyd flat fold cultivator
 217. 2) hydraulic cylinders
 218. 2) grain aerators with tubes
 219. 2) 14' feed bunks
 220. Westendorf 5'6" bucket
 221. 10' box scraper
 222. Westendorf 10' quick tach bucket
 223. IH 464 utility gas tractor
 224. 2004 Featherlite 20' 5th wheel livestock trailer
 225. Hay feeder on wheels
 226. 7'8"x16'x39" tall pull-type tandem axle trailer
 227. Trailman 7'x24' 5th wheel tandem axle livestock trailer
 228. Donahue type 30' pull type trailer
 229. International picker snoot
 230. 4) John Deere hyd cylinders and bench vise
 231. Brush Cutter push 8hp Honda motor
 232. Mac filters and belts
 233. Scaffolding
 234. Roof steel
 235. International 8' IH 80 dual state hyd spout snow blower
 236. Feterl swinging auger
 237. Sudenga bristle seed auger
 238. 16" bin fan
 239. 16" bin fan
 240. 12.5Lx15 tire on 8-bolt wheel
 241. 16.5Lx16 front tractor tire
 242. 265/70R17 Firestone tires
 243. 11R22.5 semi tires on rims
 244. Schweiss 9' dual stage auger snow blower
 245. 2) 26" 10-bolt rims
 246. 6) 25" 10-bolt rims
 247. 21.58L-16.1 Goodyear rims and tires
 248. 3) Goodyear 295/75R22.5 tires
 249. 12-387 Firestone wheels and tires
 250. 18.4-38 set of duals
 251. Assort of 4) 16" tires
 252. Assort of 4) 18" tires
 253. Assort of 3) 17" tires
 254. Assort of 4) 16" tires
 255. 245/75-16 tire on 6-bolt rim
 256. Assort of 5) 16" tires
 257. Assort of 6) wheels and tires
 258. 2) Hog waterers
 259. Pull behind car trolley
 260. 275/65R18 wheels and tires
 261. 2) 275/70-18 tires
 262. 16"/18"/20" tires
 263. 2-20" tires
 264. 5) Semi air tanks
 265. 15' Yellow bale elevator with electric motor
 266. Rosemount magnetic flow tubes
 267. 2) semi fuel tanks
 268. Oil fuel tank
 269. 1-17" tire / 1-18" tire
 270. Hyd orbit motor
 271. 3) trailer axles
 272. Air tag semi axle
 273. John Deere bean head snoots
 274. Pickup tool box
 275. Pickup running boards
 276. Massey tractor fenders
 277. Remington Kerosene 115 kw heater
 278. Westendorf 3-pt pallet forks
 279. 3-pt 8' blade
 280. Seed bag holder / metal cage
 281. 2) Pickup rail boxes
 282. Squirrel cage fan
 283. Jacobson P-195 Hammer mill
 284. Pallet of steel t-post
 285. 10) Cattle stockade panels
 286. Radiator
 287. 2) pickup front end guards
 288. Pickup tool box
 289. Orbit motor wet kit cooler
 290. AM/FM tractor radio
 291. Assort of valves, oil filters and couplers
 292. Tote of assort go-cart parts
 293. Mi-T-M cold water power washer
 294. top of an air compressor value
 295. pump and motors
 296. Banjo fitting electric motors for tarp
 297. Assort of honey wagon manure pipes
 298. Assort of muffler clamps and muffler plates
 299. Valve cover for IH 1086 tractor
 300. 3) transmission PTO's
 301. Aluminum banjo fittings
 302. Ariens snow throw push snow blower
 303. Baker wood chipper / shredder
 304. Assort of honey wagon manure items

305. 20" tire
 306. 275/65R18 tires
 307. 9.5R16.5 tires on 6-bolt rims
 308. 2) 8-bolt aluminum rims with 225 75R16 tires
 309. 2) 8-bolt aluminum rims with 245 75R16 tires
 310. 3) 215/85R16 on 8-bolt rims
 311. 1) 20" tire / 1-18" tire
 312. 3) 255/75R17 tires
 313. Set of 3 metal lockers
 314. Belt pulley transmission
 315. 30' Crust buster
 316. 2012 Cornhusker double hopper grain trailer
 317. 2003 John Deere 1290 12-row 20" corn head
 318. Gray USA 20,000 lbs. capacity maximum lift
 319. Craftsman tool chest
 320. MAC tool chest
 321. Hobart TR 250 stick welder
 322. 2) HD 220V electric cords
 323. Millermatic 250 CV-DC wire feed welder
 324. Misc tools
 325. 3) C-clamps
 326. Battery powered winch
 327. Assortment of saw blades, etc
 328. Gas cans
 329. Misc tools
 330. Vice grips and vice grip clamps
 331. Shurco parts, etc
 332. Misc parts
 333. John Deere 20T pneumatic air jack
 334. Set of Wilmar 3T yellow jack stands
 335. Set of 2T jack stands
 336. Set of 6T jack stands
 337. Hyd bottle jack
 338. Small hyd bottle jack
 339. Earthquake Viper 41cc gas chain saw
 340. Partner S-55 gas chain saw
 341. Craftsman 16"/38cc gas chain saw
 342. Electric shop light on roller stand
 343. Set of roller pipe stands
 344. Upright liquid/air tank
 345. Campbell 7 gal portable air tank with hose
 346. Makita LS 1040 compound miter saw
 347. DeWalt D28474 HD portable hand grinder
 348. 3) Smart Electrician shop lights
 349. Performa X 14" abrasive cut-off saw
 350. Misc tools
 351. Tecumseh 3hp gas motor with Pacer transfer pump
 352. Homelite 17" gas-powered weed eater
 353. Misc tools
 354. Reese V5 custom hitch receiver
 355. Misc tools
 356. DeWalt and Makita grinding wheels
 357. HD floor jack
 358. Misc tools
 359. Box of grease guns
 360. Misc tools
 361. Misc tools
 362. Misc tools
 363. Blue Point piston ring compressor pliers
 364. Misc tools
 365. Misc tools
 366. Lincoln cordless 12V grease gun
 367. Swordfish enclosed ratchet drop head pipe threaders
 368. Misc tools
 369. Misc tools
 370. Misc tools
 371. Large assortment of drill bits
 372. Misc tools
 373. Lincoln portable Ideal SP-100 arc welder
 374. Snap-on 76 piece tap and die set
 375. Conrad Motel collectible sign
 376. 2) Portable empty tool boxes and screws
 377. 1/2" K and E square drive impact wrench
 378. DeWalt cordless drill
 379. Makita 6010 D cordless drill
 380. Jong Maw hyd body frame kit SS type porta power
 381. DeWalt electric hand grinder in case
 382. Handiworks rotary tool and misc items
 383. Blue Point drill and other MAC air tool, air tire tester
 384. MAC impact wrench, Sanborn RR air tool
 385. Misc tools
 386. Fastenal electrical items in metal case
 387. Misc tools
 388. Large 5" wide trailer strap
 389. 2 Rolls of trailer straps
 390. HD punches
 391. 3) Oxygen and Acetylene tanks
 392. Many torch gauges and tips
 393. Misc tools
 394. AC Delco creeper and plastic oil dispenser
 395. Snap-on 1 13/16" open end and box end wrench
 396. Snap-on 1 5/8" open end and box end wrench
 397. Snap-on 1 9/16" open end and box end wrench
 398. Snap-on 1 7/16" open end and box end wrench
 399. Snap-on 1 1/2" open end and box end wrench
 400. Snap-on 1 3/8" open end and box end wrench
 401. Snap-on 3/4" box end angle wrench
 402. Parker 400 bu gravity wagon

403. Parker 400 bu gravity wagon
 404. 30'x21' MFS 10,000 bu stirator dryer bin
 405. 1998 Trail-EZE 53' drop deck low-boy semi trailer
 406. 1974 Custom 600 Dodge single axle truck
 407. 1996 Komatsu TD-8H Dresser diesel dozer
 408. 1998 Wallinga bulk feed tandem axle semi trailer
 409. 1993 Cat 215B diesel excavator
 410. 2002 Dressa TD-8H diesel dozer
 411. 2003 Dodge Durango SLT
 412. 2019 John Deere XUV835R gator



WWW.WW72.COM